

# SKYLINE SERIES™



## FEATURES AND BENEFITS

Provides a modern efficient method of supplying gas & electrical services in surgery or special care areas

Up to 8 gas service outlets in any desired sequence

Electrical outlets can be added on any of the four sides of the column

Side panels allow for mounting of any combination of devices such as: Ground jacks, Computer outlets, Communication devices, Slides and I.V. hooks

Bottom mounted gas outlets for use in anaesthetizing locations

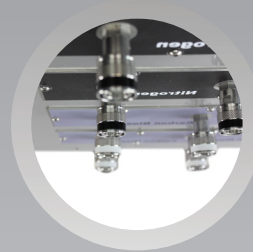
Side mounted gas outlets to facilitate the use of secondary equipment for use in specialized care areas

Custom manufactured to customer satisfaction

NFPA-99, BS EN 737, and HTM 2022 compliant

### Standard Column Heights:

- 030 = 30 inches [762mm]
- 036 = 36 inches [914mm]
- 042 = 42 inches [1067mm]



## OTHER OPTIONS



Manual  
Retractable Type



Pneumatic  
Retractable Type