

## Submittal Data Sheet

### Features

- Valves are forged brass (not cast).
- All valves are dual gauge port full port ball valves.
- 3 piece in-line repairable valves.
- Adjustable packing with blow-out proof stem design.
- Cleaned for Oxygen service.
- Plastic insulators to protect against galvanic corrosion.
- Provided with 1 ½" diameter gauges.
- Outlets conform to CGA standards (except high flow Oxygen outlet).
- Conforms to NFPA 99 & CGA standards (where applicable).
- Outlets accept DISS gas specific nut & nipple sets (except "OH" high flow oxygen model – see below).
- Ease of maintenance without removing the faceplate using a cartridge insertion tool on outlets.
- All outlets are 100% tested for flow and leaks.
- Made in the USA.

### Specification

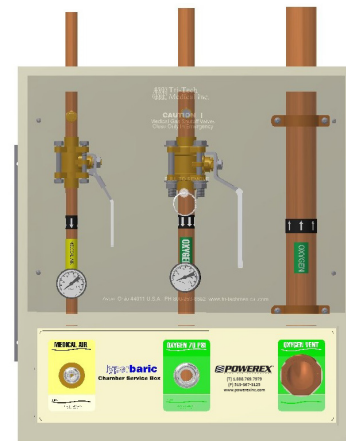
All service boxes shall be the Powerex HCB series and must be installed and tested in strict accordance with NFPA 99 standards and or any other local codes before use.

The medical gas outlets shall be Powerex Frontall™ front-loaded valve cartridge DISS medical gas outlets. The high flow model (ordered with the "OH" designation for oxygen service) shall incorporate a unique, gas specific, high flow (3,100 scfh @ 70 psig allowing 5 psig drop) front cartridge loaded single check, with the mating nut & nipple x ½ M NPT provided. The outlets shall incorporate nameplate color-coding in accordance with NFPA 99.

The medical gas outlets shall be designed so that, once installed, routine service of the primary check valves can be accomplished without removing the nameplate or gas specific portions. The primary check valve shall be unitized and of the cartridge type. In order to provide maximum flow, there shall be no secondary check valve in the oxygen outlet. Medical gas outlets that require the removal of the nameplate or gas specific components for routine service shall not be acceptable.

The outlet nameplate shall be permanently color coded with a durable, scratch resistant and protective label. The name of the gas service shall be permanently marked on the outlet for all gas services.

Medical gas outlets shall be cleaned for oxygen service in



Shown above model PX-HCBU30HC2A6VT Two valve+ One vent box with gauges ¾" oxygen, ½" medical air, 1 ½" vent

accordance with the current Compressed Gas Association (CGA) Pamphlet G-4.1 and capped.

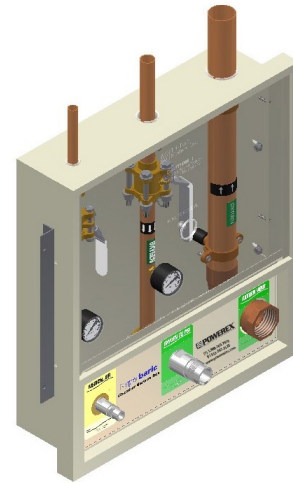
**Valves** – The valves shall be dual gauge port, forged brass, ball-type, with Teflon (TFE) seats and seals. All valves shall be rated at a working pressure of 600 psi and shall be operated by a lever-type handle, requiring only a quarter turn from a fully open position to a fully closed position. Valves shall incorporate an adjustable packing and a blow-out proof stem. Only full port valves having flow rates comparable to equivalent size of pipe shall be used. All valves shall be provided with type K copper tubing extensions to facilitate installation. Valves shall be 3 piece in-line repairable type. Each valve assembly shall be supplied cleaned for oxygen service in accordance with current CGA standards. The valve tube ends shall be capped and the box assembly sealed in a protective container to prevent contamination prior to installation.

**Gauges** shall be 1 ½" diameter for monitoring pressure and shall state: "USE NO OIL". Dual scale gauges are not acceptable for U.S.A. installations.

**Vent** – The vent line shall be 1 ½" type K copper tube outlet connection x 1 ½ F NPT inlet connection and labeled Oxygen Vent.

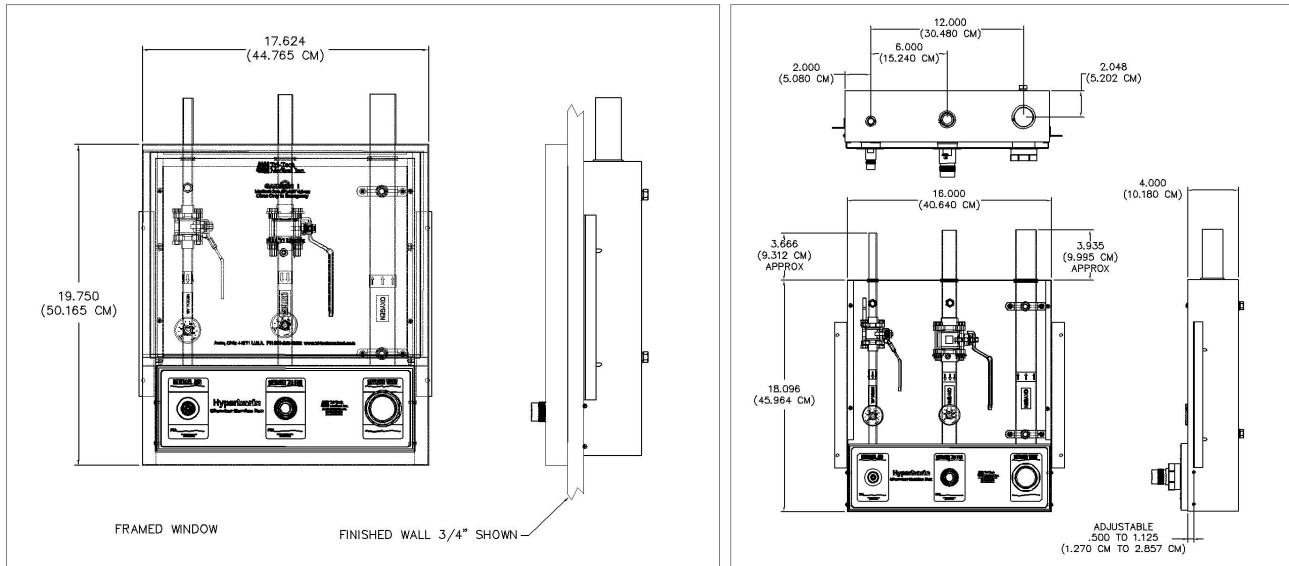
**Box** – The service box shall be 18 gauge sheet steel construction painted to prevent rust. The box shall be supplied with an adjustable plaster flange ½” to 1 ⅛” for easy mounting.

**Window** – Service box assembly shall be supplied with a formed steel decorative frame painted white which encloses an easily removable flexible window. The window shall be a “smoked” translucent flexible plastic with a pull-out ring pre-mounted to the center of the window. The window shall not be replaceable while any valve is in a closed position. Window shall be silk screened with the following statement “CAUTION: MEDICAL GAS SHUTOFF VALVES. CLOSE ONLY IN EMERGENCY.”



Shown above model PX-HCBU3OHC2A6VT Two valve+ One vent box with gauges ¾” high flow oxygen (with check), ½” medical air, 1 ½” oxygen vent

## Dimensions



## Ordering Information

Part Number	Description
PX-HCBU3OD2A6VT	Valve/Outlet/Vent box with easily removable flexible window and ¾” Oxygen valve & DISS outlet (single check), ½” Medical Air & DISS outlet, 1 ½” vent x 1 ½” F NPT Inlet.
PX-HCBU3OHC2A6VT	Valve/Outlet/Vent box with easily removable flexible window and ¾” Oxygen valve & high flow Oxygen outlet (single check), ½” Medical Air & DISS outlet, 1 ½” vent x 1 ½” F NPT Inlet. Also includes mating nut & nipple x ½ M NPT for high flow oxygen outlet flow rate of high flow oxygen outlet is in excess of 3,100 scfh @ 70 psig allowing a 5 psig drop.
PX-HCBU3OHW2A6VT	Valve/Outlet/Vent box with easily removable flexible window and ¾” Oxygen valve & high flow Oxygen outlet (without check), ½” Medical Air & DISS outlet, 1 ½” vent x 1 ½” F NPT Inlet. Also includes mating nut & nipple x ½ M NPT for high flow oxygen outlet flow rate of high flow oxygen outlet is in excess of 5,000 scfh @ 70 psig allowing a 5 psig drop.