

Submittal Data Sheet

Features

- UL Listed to UL 1331 and CSA Z9170-1.
- Conforms to NFPA 99 and CGA standards.
- Accepts Ohmeda/Ohio gas specific compatible male adaptors.
- Compensates for variation in wall thicknesses from ½" to 1 ¼".
- Gas specific indexing.
- Modular design.
- 5" centers.
- All outlets are 100% tested for flow and leaks.
- Nameplate color coding per NFPA 99.
- 360° swivel inlet tube.
- Metal back and nameplate.
- Strength of connections provides support for dispensing equipment without the use of additional brackets.
- Made in the USA.

Specification

The medical gas wall outlets shall be Powerex Puritan compatible quick connect medical gas outlets. The outlets shall be modular singles, and shall incorporate nameplate color-coding in accordance with NFPA 99. The single modular outlets shall be of a design that provides for ganging of rough-in plates in the field to form multiples. The gas services shall be sequentially arranged and located as shown on the plans with a minimum centerline spacing of 5 inches (12.5 cm) between outlets.

The medical gas outlets shall be designed so that upon removal of the nameplate assembly, the secondary check valve shall operate automatically to stop the free flow of the positive pressure gas services. There shall be no secondary check for Medical Vacuum or WAGD services. The seal between the nameplate and the rough-in shall be a double O-ring which is serviceable without shutting off the gas service and is capable of supporting 10 pounds at 2 inches from the nameplate without leaking.

The outlet nameplate shall be permanently color coded with a durable, scratch resistant and protective label. The outlet trim plate shall be durable plastic, attached with the nameplate to the rough-in assembly, and provide automatic plaster adjustment from ½ to 1 ¼ of an inch (1.3 cm to 3 cm). The name of the gas service shall be permanently marked on the outlet bracket and the outlet. The outlet's rough-in supply tube shall be a 7 inch (18 cm) length of ½ OD copper Type K for all gas services and labeled with



Part Number PX-XQ1124 shown

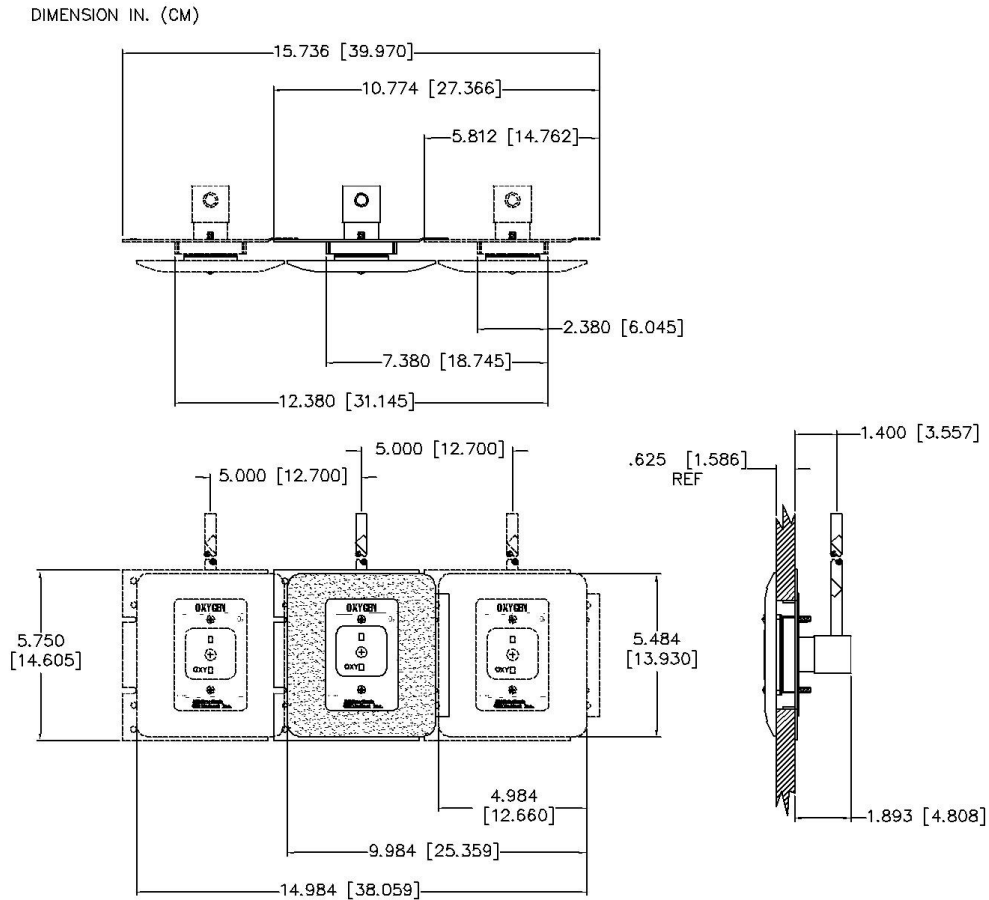
the name of the gas service.

Medical gas outlets shall be cleaned for oxygen service in accordance with the current Compressed Gas Association (CGA) Pamphlet G-4.1, capped and placed in a protective container for shipment. The outlets shall be installed in strict accordance with manufacturer's instructions, and tested before use in conformance with local and federal codes.

MRI compatible models are available (See ordering information chart) and are made with non-ferrous materials.



Layout



Ordering Information

Standard Recessed Outlets Complete - with the plastic white trim plate

Gas Service	Recessed Wall Complete	MRI Compatible
Nitrous Oxide	PX-XQ1104	*PX-XQ1104-MRI
Carbon Dioxide	PX-XQ1108	*PX-XQ1108-MRI
Nitrogen	N/A	N/A
Medical Air	PX-XQ1116	PX-XQ1116-MRI
Medical Vacuum	PX-XQ1122	PX-XQ1122-MRI
Oxygen	PX-XQ1124	PX-XQ1124-MRI
WAGD	PX-XQ1132	*PX-XQ1132-MRI
Instrument Air	N/A	N/A
Slide	PX-XF1144	*PX-XF1144-MRI

*Indicates that these are **NOT** UL Listed outlets

To place an order or request additional information call toll-free 1-888-769-7979, fax us at 1-513-367-3125, or email us at order@powerexinc.com. Please visit our website at www.powerexinc.com.

If ordering die cast trim plates for wall outlets you need back bodies and faceplates ordered separately

Gas Service	Back Body ½ Tube Size Wall	MRI Compatible	Outlet Faceplate	MRI Compatible	Trim Plate Die Cast White	Trim Plate Die Cast Pewter
Nitrous Oxide	PX-XC1104-A	*PX-XC1104-A-MRI	PX-XQ1004-A	*PX-XQ1004-A-MRI	PX-XC1100-9DC	PX-XC1100-9DCP
Carbon Dioxide	PX-XC1108-A	*PX-XC1108-A-MRI	PX-XQ1008-A	*PX-XQ1008-A-MRI		
Nitrogen	N/A	N/A	N/A	N/A		
Medical Air	PX-XC1116-A	PX-XC1116-A-MRI	PX-XQ1016-A	PX-XQ1016-A-MRI		
Medical Vacuum	PX-XC1122-A	PX-XC1122-A-MRI	PX-XQ1022-A	PX-XQ1022-A-MRI		
Oxygen	PX-XC1124-A	PX-XC1124-A-MRI	PX-XQ1024-A	PX-XQ1024-A-MRI		
WAGD	PX-XC1132-A	*PX-XC1132-A-MRI	PX-XQ1032-A	*PX-XQ1032-A-MRI		
Instrument Air	N/A	N/A	N/A	N/A		

Slide	Die Cast Pewter	Pewter MRI Compatible	Die Cast White	Die Cast MRI Compatible
	PX-XF1145	*PX-XF1145-MRI	PX-XF1146	PX-XF1146-MRI

*Indicates that these are **NOT** UL Listed outlets

To place an order or request additional information call toll-free 1-888-769-7979, fax us at 1-513-367-3125, or email us at order@powerexinc.com. Please visit our website at www.powerexinc.com.